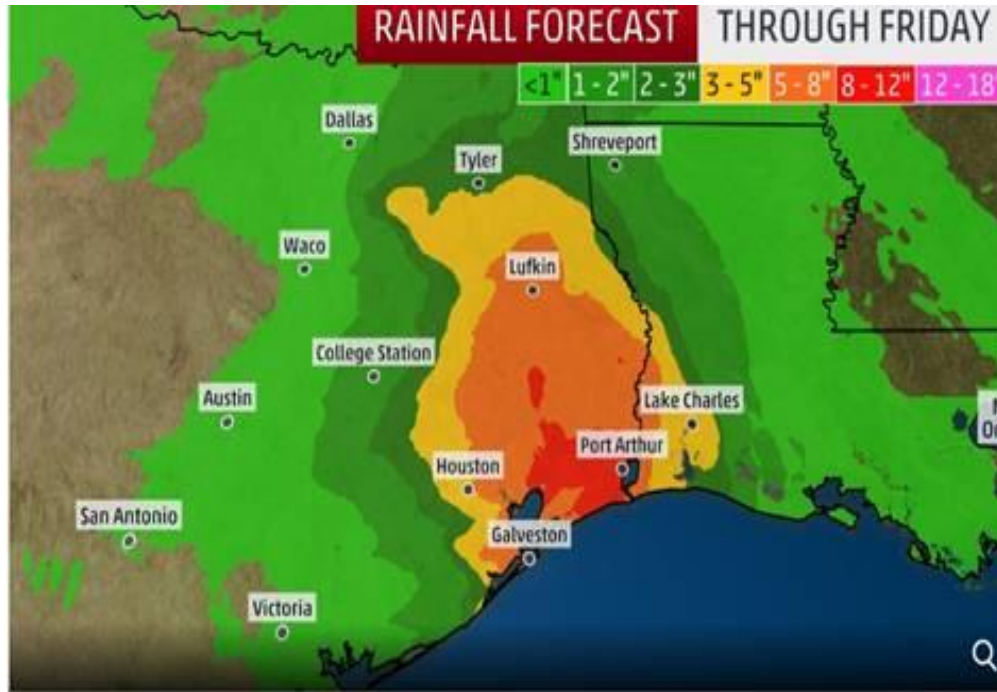

North Houston Contingency Plan Tropical Storm Imelda September 2019



September 18:

- Predicted total 6 to 12 inches with isolated 18 inches across portions of eastern Texas
- Excessive rainfall for the upper Texas coast into Wednesday night
- Expand northward into much of eastern Texas
- Inland eastern Texas will receive 2-5"

At-Risk Postal Facilities:

- HOU- 98 facilities at HIGH risk of Flash Flooding; including Park Place VMF, Houston VMF, N. Houston PDC, District Office
 - 3 Processing Facilities (North Houston P&DC, North Houston Annex and Beaumont P&DC)
- RIO- 13 offices at SLIGHT risk
- LOU- 60 Facilities at SLIGHT risk
- DAL- 122 facilities at MODERATE risk



September 19

- At 1:00 a.m., the Beaumont P&DF reported increasing rainfall with flooding in parking lot and the facility docks in jeopardy of water inundation. Seventeen (17) employees in the facility were stranded and unable to leave. These employees sheltered in place on the second floor of the facility.
- At 10:30 a.m., the North Houston P&DC expansion area suffered a partial wall and roof collapse. Three (3) employees with non-life threatening injuries were treated on-scene. One (1) employee vehicle totaled in the collapse. The workroom floor was evacuated immediately. The Administrative Area (offices) started an organized shut down at 4:00 p.m.
- At 3:00 p.m., the North Houston Annex also experienced roof leakage, due to a broken skylight unit. Employees evacuated the work room floor and remained sheltered in the cafeteria. An organized evacuation began at 4:00 p.m.
- Due to the flooding, there were widespread reports of employees being unable to reach their work locations and many areas were inaccessible for delivery. Ninety-two (92) offices, 252 ZIP Codes, 3,257 routes & 660,832 deliveries were impacted.
- The Houston George Bush Intercontinental Airport was closed; reopening on 9/20.

September 19

- Within hours of the roof/wall collapse, Continuity of Operations Plan (COOP) implemented.
- A redirection plan for Houston mail was implemented, sending mail to 11 different facilities.
- Industry Alerts and Press Release issued –Embargos placed on Lives, Marketing & Periodical mail.

September 20

- North Houston Annex's skylight repaired. Facility returned to full operations 3 p.m.
- Southern Area Leadership arrived in Houston
- Industry Alert, Press Release and Congressional Briefing Sheet issued

September 21

- Area Recovery Teams arrive in Houston.
- Amazon, UPS, DHL, and FedEx resume drop shipments to delivery units in the afternoon.
- Union Leadership briefed; Congressional Briefing Sheet issued
- North Houston Plant (with the exception of the expansion building) was cleared for entry at 8:00 p.m.

September 22

- Beaumont P&DF cleared to be occupied at 6:00 p.m.
- North Houston P&DC employees report back to work 7 a.m.
- Industry Alert and Press Releases issued

September 23

- Beaumont P&DC resumes normal operations.
- Embargo ended for Marketing Flats & Periodical Flat Mail.
- Flats and Outgoing Package Processing resumes in Houston P&DC.
- 100% of the 4,620 employees within the storm-impacted area accounted for.
- All Houston Retail & Delivery Units confirmed operational, with the exception of six (6) Post Offices, which remain temporarily suspended. Carriers from these offices are redirected to other offices to resume deliveries.
- With the assistance of our certified contractors, we began to retrieve and dispatch unprocessed mail from the undamaged portion of the expansion building to DFW (no damaged mail has been identified).
- Industry Alerts, Press Release, and Congressional Briefing Sheet issued

September 24

- Embargo lifted on Marketing letters and redirected to offload site.
- Customer Webinar conducted by Southern Area; Congressional Briefing Sheet issued (weekly update sent 10/4)

September 25

- Facility Assessments completed on all damaged Postal facilities.

September 26

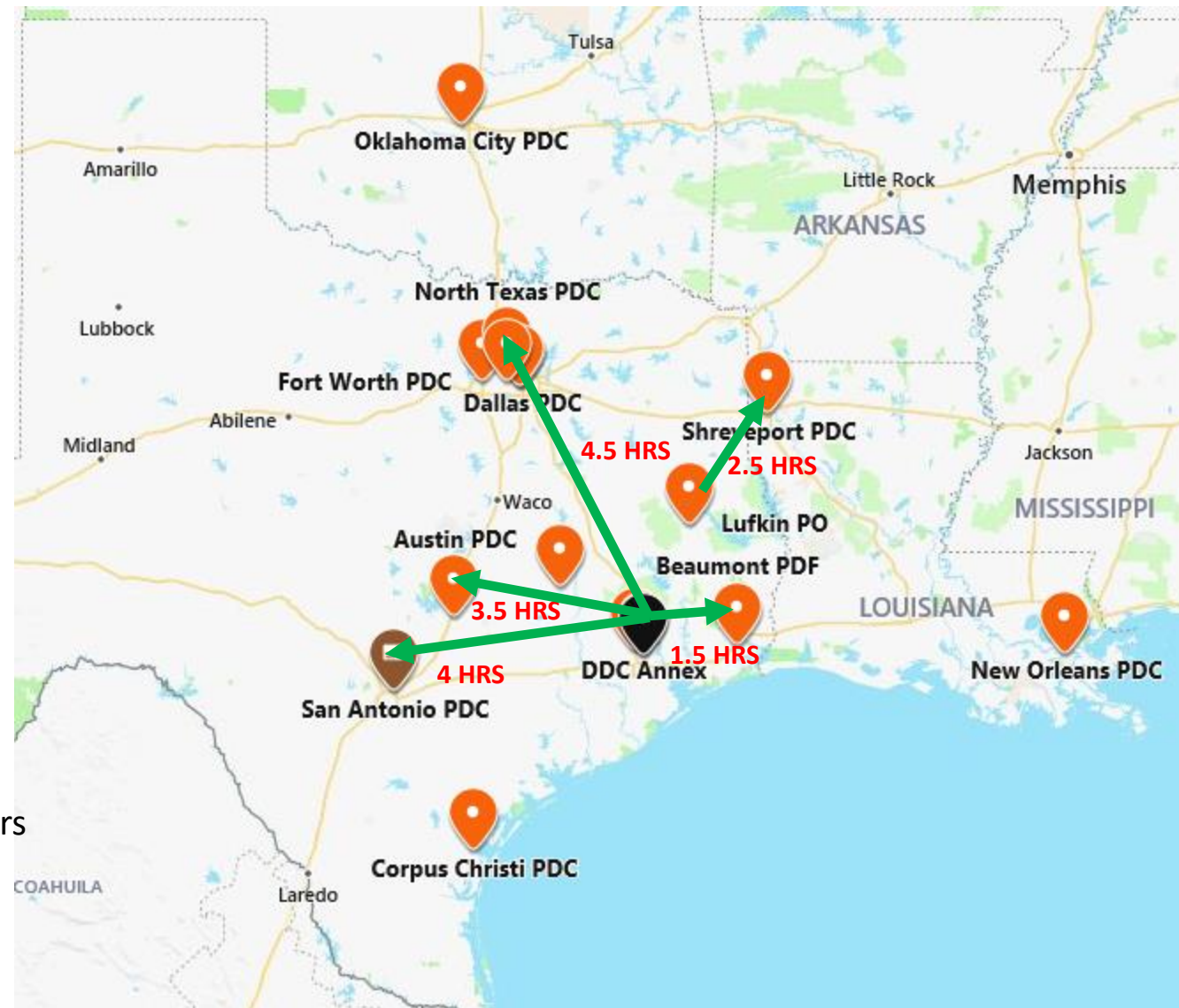
- Unprocessed mail completely removed from undamaged portion of expansion area & dispatched to DFW recovery processing site. Construction and repairs ongoing.

The Houston District has 3 processing facilities:

- North Houston P&DC
- North Houston Annex
- Beaumont P&DC
- Peak Annex lease signed and activated two (2) months early

Offload Processing Facilities

- Southern Area STC- Incoming separations & Marketing Letter drop shipments
- NTX- Primary Processing
- Dallas NDC- HSTS LV sort for Marketing trays
- Dallas P&DC- DPS Processing
- Fort Worth P&DC- DPS Processing
- San Antonio- Outgoing Primary processing/DPS Processing
- Austin- Outgoing Primary processing/DPS Processing
- Shreveport- 759 collections and DPS Processing
- Oklahoma City - PARS/FPARS & Marketing DSCF & DNDC Letters
- Corpus Christi - DPS Processing
- Beaumont – DPS Processing
- New Orleans – Outgoing Manual Letters



North Houston P&DC (773) as of 9/23

- Resumed normal Collection and Cancellation Operations with the following exceptions
- Note: **SCF 759** collection mail will go to Shreveport PDC (711)

Austin P&DC (786)

North Texas P&DC (770)

San Antonio P&DC (782)

- All three sites processing Outgoing Primary Letters

Oklahoma P&DC (730)

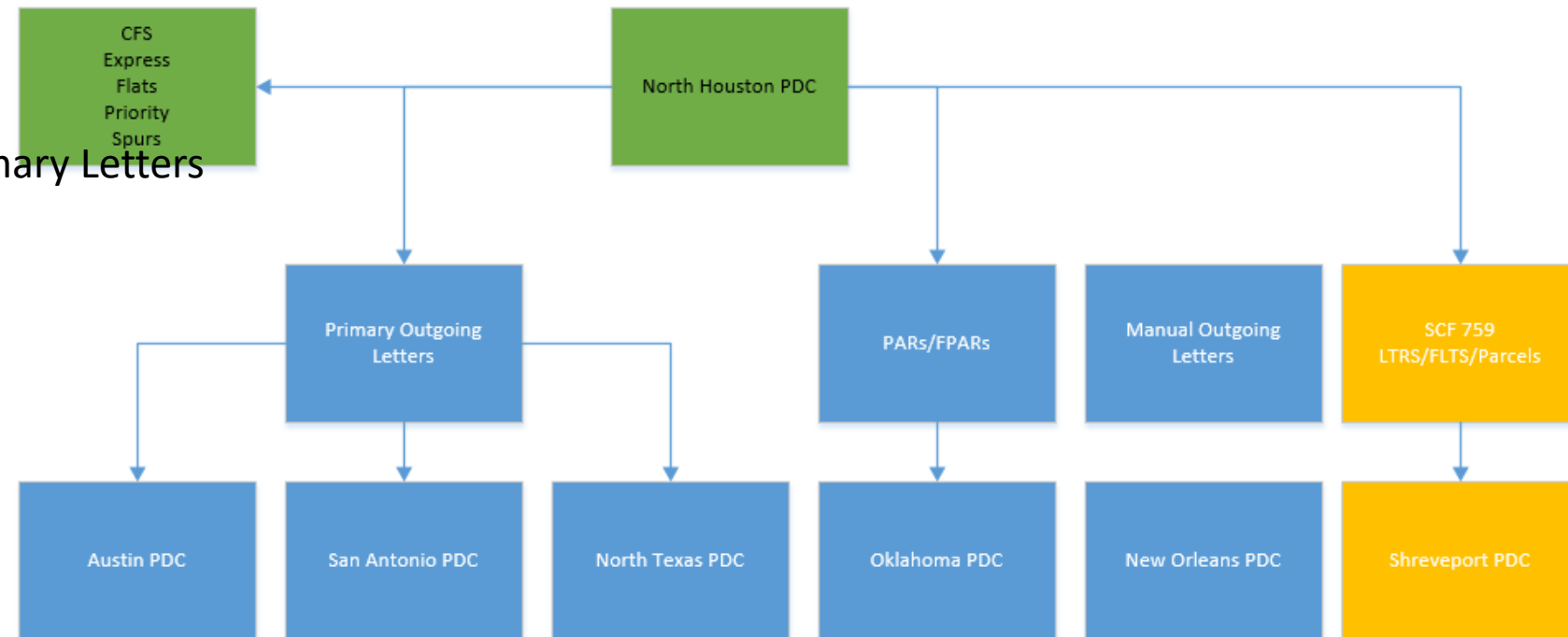
- PARS/FPARs

New Orleans P&DC (700)

- Processing Outgoing Manual Letters

Shreveport P&DC (711)

- Processing All **SCF 759** (Lufkin) volume



All Incoming Trips are now flowing to Houston Plants.

Any incoming letter volumes received at 75H (Dallas STC) be sorted to the LV plant and 3-digit sent to NTX

Southern Area STC (75H)

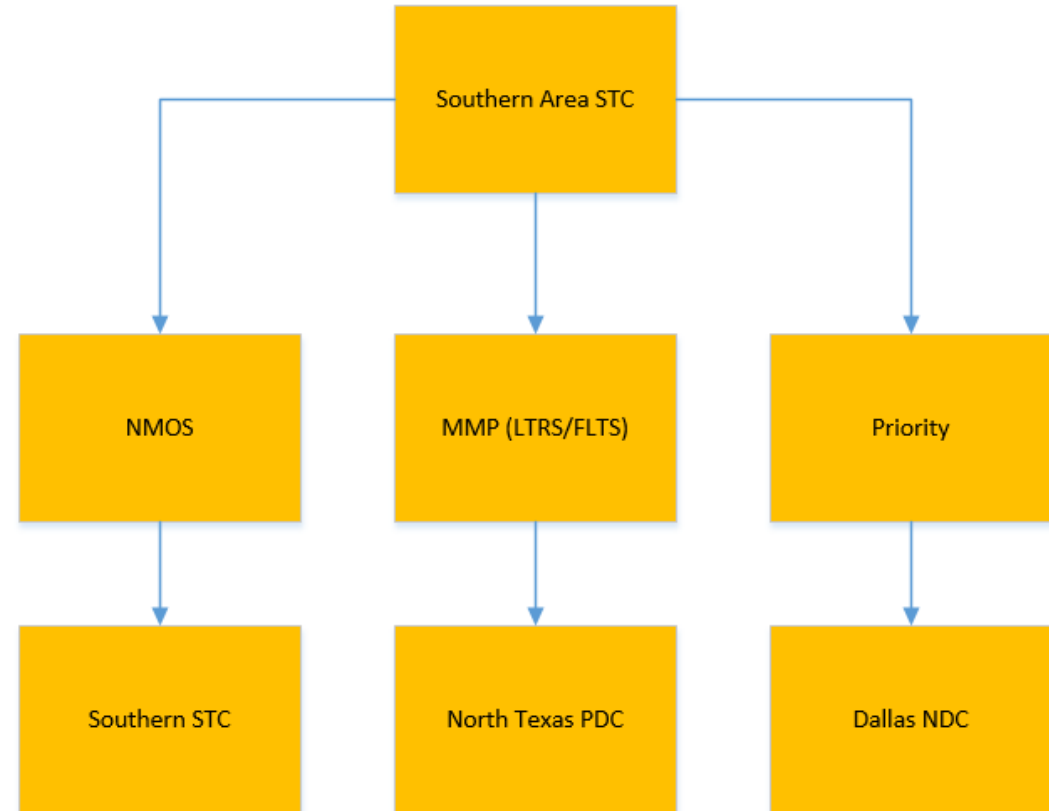
- Worked all Houston NMOs (9/21 – 9/23)
- Sort Letter Trays by LV to offload P/DC

Dallas NDC (75Z)

- Worked all Houston Incoming Priority (9/21 – 9/23)

North Texas P&DC (750)

- Worked all Houston MMP LTRS/ (FLTS 9/21 – 9/23)



Inbound Air volume will enter through Houston Bush Intercontinental Airport (IAH)

IAH

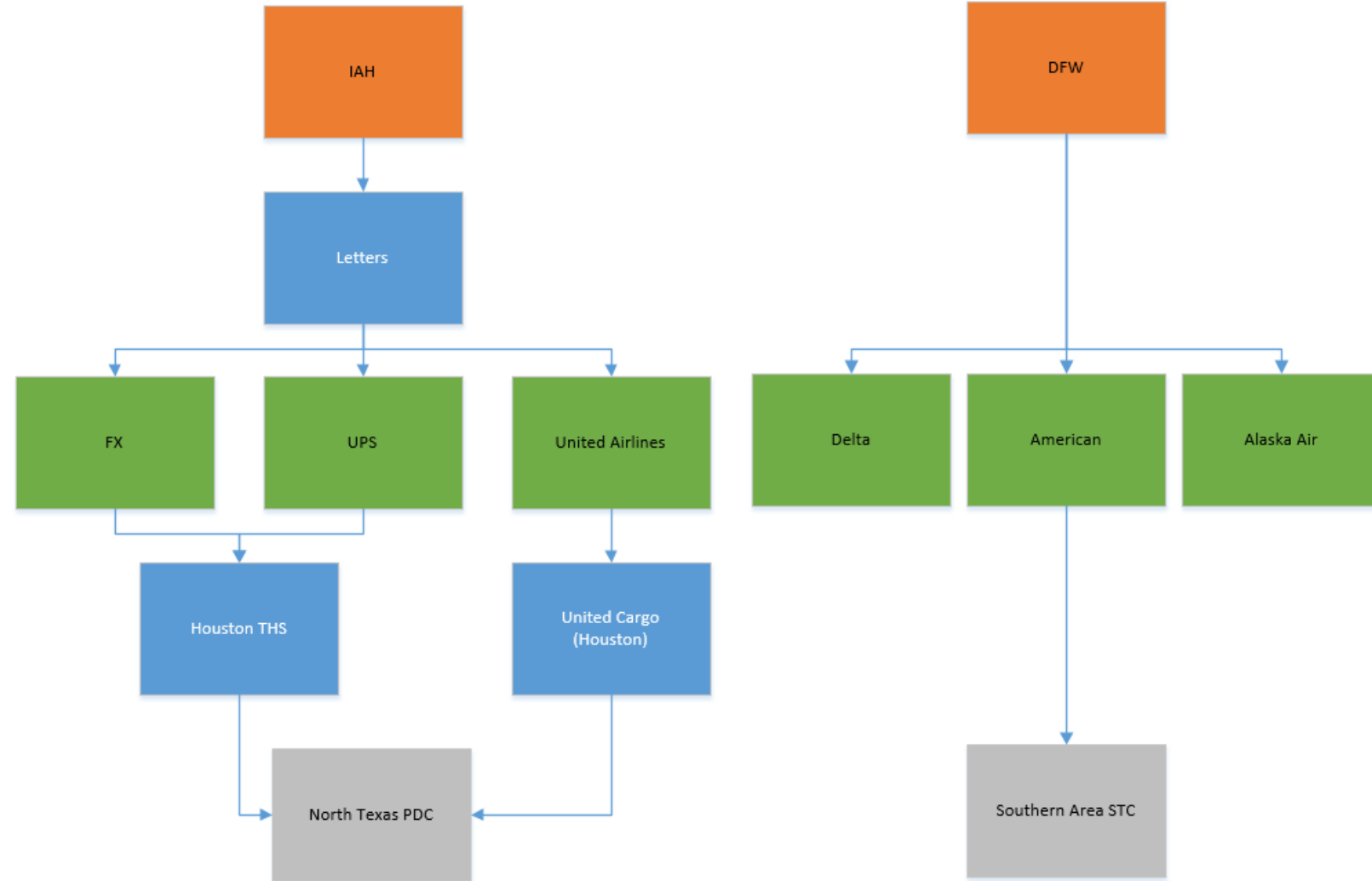
Priority and SPRS will be kept in Houston for processing.

Letter Processing

FX, UPS – will get sorted at Houston THS and then sent to North Texas P&DC.

United Airlines – will get sorted at United Cargo and sent to North Texas.

All other CAIR suppliers will be sent to DFW until further noticed.



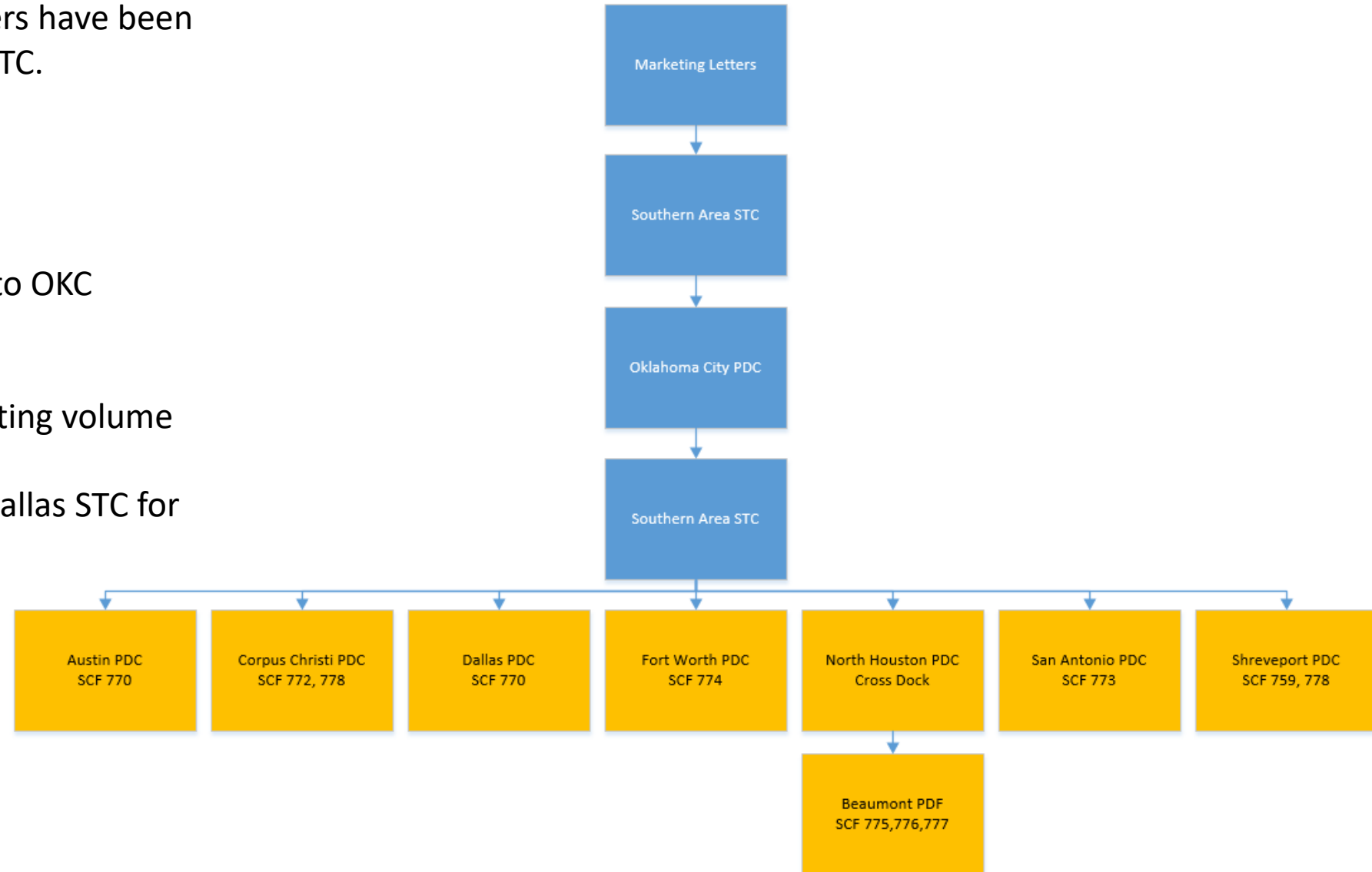
All North Houston Marketing letters have been redirected to the Southern Area STC.

Southern Area STC

- Will sort out LV level
- All 3-digit volume will be sent to OKC

Oklahoma City P&DC

- Process 3-digit Houston marketing volume
- Sort to LV level
- Dispatch the LV trays back to Dallas STC for cross dock to plants



	avg daily 2-pass	Depart	Arrive	Site
BEAUMONT	1,475,467			
LV77517U-2	51,400		0200	PEAK ANX
LV77521U-2	43,803		0200	PEAK ANX
LV77523U-2	48,425		0200	PEAK ANX
LV77532U-2	71,453		0200	PEAK ANX
LV77541U-2	60,532		0200	PEAK ANX
LV77552U-2	42,691		0200	PEAK ANX
LV77553U-2	61,769		0200	PEAK ANX
LV77572U-2	58,174		0200	PEAK ANX
LV77573U-2	80,289		0200	PEAK ANX
LV77584U-2	68,815		0200	PEAK ANX
LV77588U-2	91,574		0200	PEAK ANX
LV77592U-2	58,810		0200	PEAK ANX
LV77611U-2	57,082			in-house
LV77627U-2	63,716			in-house
LV77642U-2	74,815			in-house
LV77703U-2	60,322			in-house
LV77705U-2	63,120			in-house

	avg daily 2-pass	Depart	Arrive	Site
DALLAS P&DC	1,029,647			
LV77002U-2	25,088	2100-2200	0200-0300	DDC ANX
LV77003U-2	27,936	2100-2200	0200-0300	DDC ANX
LV77004U-2	29,578	2100-2200	0200-0300	DDC ANX
LV77005U-2	35,233	2100-2200	0200-0300	DDC ANX
LV77006U-2	24,750	2100-2200	0200-0300	DDC ANX
LV77007U-2	47,164	2100-2200	0200-0300	DDC ANX
LV77008U-2	34,624	2100-2200	0200-0300	DDC ANX
LV77011U-2	18,841	2100-2200	0200-0300	DDC ANX
LV77013U-2	42,334	2100-2200	0200-0300	DDC ANX
LV77014U-2	60,292	2100-2200	0200-0300	DDC ANX
LV77015U-2	37,259	2100-2200	0200-0300	DDC ANX
LV77017U-2	33,109	2100-2200	0200-0300	DDC ANX
LV77018U-2	24,286	2100-2200	0200-0300	DDC ANX
LV77019U-2	36,086	2100-2200	0200-0300	DDC ANX
LV77020U-2	16,148	2100-2200	0200-0300	DDC ANX
LV77021U-2	22,095	2100-2200	0200-0300	DDC ANX

	avg daily 2-pass	Depart	Arrive	Site
SHREVEPORT	762,969			
LV75901U-2	49,654	0330	0540	LUFKIN
LV75930U-2	32,771	0330	0540	LUFKIN
LV75935U-2	36,304	0330	0540	LUFKIN
LV75961U-2	33,525	0330	0540	LUFKIN
LV77502U-2	42,488	2000	0100	PEAK ANX
LV77505U-2	63,297	2000	0100	PEAK ANX
LV77507U-2	47,491	2000	0100	PEAK ANX
LV77516U-2	39,454	2000	0100	PEAK ANX
896FE518	8,000	2000	0100	PEAK ANX
896FE564	35,000	2000	0100	PEAK ANX
896FELU2	30,000	2000	0100	PEAK ANX
(759 & 778 smalltowns 759 sm twns		0330	0540	LUFKIN

	avg daily 2-pass	Depart	Arrive	Site
CORPUS	628,961			
LV77803U-2	63,061	2130	0445	BRYAN
LV77831U-2	28,084	2130	0445	BRYAN
LV77842U-2	25,633	2130	0445	BRYAN
LV77865U-2	67,240	2130	0445	BRYAN
LV77868U-2	38,401	2130	0445	BRYAN
LV77210U-2 (b)	20,365	2130	0230	DDC ANX
LV77249U-2	45,734	2130	0230	DDC ANX
LV77298U-2	25,962	2130	0230	DDC ANX

	avg daily 2-pass	Depart	Arrive	Site
FTWORTH	2,162,764			
LV77402U-2	86,734	2100-2200	0200-0300	PEAK ANX
LV77404U-2	33,029	2100-2200	0200-0300	PEAK ANX
LV77406U-2	89,885	2100-2200	0200-0300	PEAK ANX
LV77417U-2	66,518	2100-2200	0200-0300	PEAK ANX
LV77429U-2	87,885	2100-2200	0200-0300	PEAK ANX
LV77433U-2	83,751	2100-2200	0200-0300	PEAK ANX
LV77434U-2	64,115	2100-2200	0200-0300	PEAK ANX
LV77444U-2	31,096	2100-2200	0200-0300	PEAK ANX
LV77449U-2	94,913	2100-2200	0200-0300	PEAK ANX
LV77450U-2	59,303	2100-2200	0200-0300	PEAK ANX
LV77478U-2	76,608	2100-2200	0200-0300	PEAK ANX
LV77479U-2	88,372	2100-2200	0200-0300	PEAK ANX
LV77492U-2	76,488	2100-2200	0200-0300	PEAK ANX
LV77494U-2	78,898	2100-2200	0200-0300	PEAK ANX
LV77497U-2	63,787	2100-2200	0200-0300	PEAK ANX
896FE420	15,000	2100-2200	0200-0300	PEAK ANX

	avg daily 2-pass	Depart	Arrive	Site
SAN ANTONIO	2,162,189			
LV77305U-2	83,199	2200-2300	0215-0315	PEAK ANX
LV77316U-2	99,305	2200-2300	0215-0315	PEAK ANX
LV77318U-2	68,515	2200-2300	0215-0315	PEAK ANX
LV77325U-2	65,979	2200-2300	0215-0315	PEAK ANX
LV77328U-2	50,260	2200-2300	0215-0315	PEAK ANX
LV77338U-2	59,475	2200-2300	0215-0315	PEAK ANX
LV77340U-2	40,696	2200-2300	0215-0315	PEAK ANX
LV77346U-2	58,964	2200-2300	0215-0315	PEAK ANX
LV77353U-2	67,809	2200-2300	0215-0315	PEAK ANX
LV77357U-2	69,612	2200-2300	0215-0315	PEAK ANX
LV77373U-2	45,942	2200-2300	0215-0315	PEAK ANX
LV77375U-2	76,401	2200-2300	0215-0315	PEAK ANX
LV77379U-2	81,331	2200-2300	0215-0315	PEAK ANX
LV77381U-2	38,797	2200-2300	0215-0315	PEAK ANX
LV77386U-2	82,212	2200-2300	0215-0315	PEAK ANX
LV77393U-2	92,597	2200-2300	0215-0315	PEAK ANX
896FE331	7,500	2200-2300	0215-0315	PEAK ANX
896FE363	8,000	2200-2300	0215-0315	PEAK ANX

	avg daily 2-pass	Depart	Arrive	Site
AUSTIN P&DC	3,883,295			
LV77022U-2	43,620	2230-0015	0200-0335	DDC ANX
LV77024U-2	63,713	2230-0015	0200-0335	DDC ANX
LV77025U-2	29,842	2230-0015	0200-0335	DDC ANX
LV77027U-2	31,853	2230-0015	0200-0335	DDC ANX
LV77028U-2	88,064	2230-0015	0200-0335	DDC ANX
LV77030U-2	32,420	2230-0015	0200-0335	DDC ANX
LV77031U-2	35,367	2230-0015	0200-0335	DDC ANX
LV77032U-2	46,018	2230-0015	0200-0335	DDC ANX
LV77033U-2	47,721	2230-0015	0200-0335	DDC ANX
LV77034U-2	47,283	2230-0015	0200-0335	DDC ANX
LV77035U-2	58,297	2230-0015	0200-0335	DDC ANX
LV77036U-2	38,555	2230-0015	0200-0335	DDC ANX
LV77037U-2	46,834	2230-0015	0200-0335	DDC ANX
LV77038U-2	32,127	2230-0015	0200-0335	DDC ANX
LV77039U-2	42,496	2230-0015	0200-0335	DDC ANX
LV77040U-2	39,292	2230-0015	0200-0335	DDC ANX
LV77041U-2	62,637	2230-0015	0200-0335	DDC ANX
LV77042U-2	39,758	2230-0015	0200-0335	DDC ANX
LV77045U-2	80,543	2230-0015	0200-0335	DDC ANX
LV77055U-2	33,599	2230-0015	0200-0335	DDC ANX
LV77056U-2	33,498	2230-0015	0200-0335	DDC ANX
LV77057U-2	41,301	2230-0015	0200-0335	DDC ANX
LV77059U-2	63,485	2230-0015	0200-0335	DDC ANX
LV77063U-2	33,064	2230-0015	0200-0335	DDC ANX
LV77064U-2	70,099	2230-0015	0200-0335	DDC ANX
LV77065U-2	30,612	2230-0015	0200-0335	DDC ANX
LV77070U-2	50,009	2230-0015	0200-0335	DDC ANX
LV77072U-2	37,367	2230-0015	0200-0335	DDC ANX
LV77073U-2	60,761	2230-0015	0200-0335	DDC ANX
LV77074U-2	28,224	2230-0015	0200-0335	DDC ANX
LV77077U-2	63,247	2230-0015	0200-0335	DDC ANX
LV77079U-2	49,127	2230-0015	0200-0335	DDC ANX
LV77080U-2	28,421	2230-0015	0200-0335	DDC ANX
LV77081U-2	19,376	2230-0015	0200-0335	DDC ANX
LV77082U-2	42,857	2230-0015	0200-0335	DDC ANX
LV77083U-2	58,279	2230-0015	0200-0335	DDC ANX
LV77084U-2	78,783	2230-0015	0200-0335	DDC ANX
LV77087U-2	24,265	2230-0015	0200-0335	DDC ANX
LV77088U-2	41,128	2230-0015	0200-0335	DDC ANX
LV77089U-2	43,275	2230-0015	0200-0335	DDC ANX
LV77095U-2	75,227	2230-0015	0200-0335	DDC ANX
LV77099U-2	29,207	2230-0015	0200-0335	DDC ANX

	LV RANGES		VOLUME (TOTAL 918 & 919)
DALLAS P&DC	77002-77021		1,029,647
AUSTIN P&DC	77022-77099		3,883,295
CORPUS	ALL 772	ALL 778	628,961
SAN ANTONIO	ALL 773		2,162,189
FTWORTH	ALL 774		2,162,764
SHREVEPORT	77502-77516	ALL 759	689,969
BEAUMONT	776-777	77517-77592	1,475,467

12,032,291

BMT PDC

LV77517U-2
 LV77521U-2
 LV77523U-2
 LV77532U-2
 LV77541U-2
 LV77552U-2
 LV77553U-2
 LV77572U-2
 LV77573U-2
 LV77584U-2
 LV77588U-2
 LV77592U-2
LV77611U-2
LV77627U-2
LV77642U-2
LV77703U-2
LV77705U-2

NO PDC

LV77035U-2
 LV77036U-2
 LV77037U-2
 LV77038U-2
 LV77039U-2
 LV77040U-2
 LV77041U-2
 LV77042U-2

CRP PDC

LV77803U-2
 LV77831U-2
 LV77842U-2
 LV77865U-2
 LV77868U-2
LV77210U-2
 LV77249U-2
 LV77298U-2
 LV77027U-2
 LV77072U-2

FTW PDC

LV77429U-2
 LV77433U-2
 LV77434U-2
 LV77449U-2
 LV77492U-2
 LV77494U-2
 LV77497U-2

896FE420

AMA PDC

LV77444U-2
 LV77478U-2

AUS PDC

LV77070U-2
 LV77073U-2
 LV77074U-2
 LV77077U-2
 LV77079U-2
 LV77080U-2
 LV77081U-2
 LV77082U-2
 LV77083U-2
 LV77084U-2
 LV77087U-2
 LV77088U-2
 LV77089U-2
 LV77095U-2
 LV77099U-2

LR PDC

LV77028U-2
 LV77030U-2
 LV77031U-2
 LV77032U-2
 LV77033U-2
 LV77034U-2

SHV PDC

LV75902U-2
 LV75904U-2
 LV75925U-2
 LV75948U-2
 LV75951U-2
 LV75963U-2
 LV75964U-2
 LV77507U-2
 LV77510U-2
 LV77511U-2
 LV77512U-2
 LV77516U-2
 LV77064U-2
 LV77065U-2
896FE518
896FE564
896FELU2

TLS PDC

LV77045U-2
 LV77055U-2
 LV77056U-2
 LV77057U-2
 LV77059U-2
 LV77063U-2

SAT PDC

LV77304U-2
 LV77356U-2
 LV77318U-2
 LV77325U-2
 LV77328U-2
 LV77338U-2
 LV77340U-2
 LV77346U-2
 LV77353U-2
 LV77357U-2
 LV77373U-2
 LV77375U-2
 LV77379U-2
 LV77381U-2
 LV77386U-2
 LV77393U-2
896FE331
896FE363

OKC PDC

LV77402U-2
 LV77404U-2
 LV77406U-2
 LV77417U-2

DAL PDC

LV77002U-2
 LV77003U-2
 LV77004U-2
 LV77005U-2
 LV77006U-2
 LV77007U-2
 LV77008U-2
 LV77011U-2
 LV77013U-2
 LV77014U-2
 LV77015U-2
 LV77017U-2
 LV77018U-2
 LV77019U-2
 LV77020U-2
 LV77021U-2
 LV77022U-2
 LV77024U-2
 LV77025U-2

LUB PDC

LV77450U-2
 LV77479U-2